



FIND

Property Solutions



30 Beaumont Drive , Cheltenham, GL51 0LF

Asking price

£ 300,000

Find Property Solutions Welcome you to Beaumont Drive - a charming cul-de-sac location that could be the perfect setting for your next home! This extended family house boasts 3 bedrooms, ideal for a growing family or those looking for extra space.

As you step inside, you'll be greeted by a beautifully re-fitted kitchen and bathroom, adding a touch of modern elegance to the property. The 1,249 sq ft of living space includes 3 reception rooms, providing ample space for entertaining guests or simply relaxing with your loved ones.

One of the standout features of this property is its proximity to local schools, making the morning school run a breeze. Whether you're taking the next step on the property ladder or looking for your first home, this house offers the perfect blend of comfort and convenience.

Don't miss out on the opportunity to make this house your home - schedule a viewing today and envision the possibilities that await you at Beaumont Drive!

- Extended Family Home
- Cul-de-sac Location
- Re-fitted Kitchen
- Re-fitted FOUR piece Bathroom suite
- Enclosed Rear Garden
- Garage Conversion Offering potential for a 4th Bedroom
- Utility Room
- Built in Wardrobes to Three bedrooms

Viewing

Please contact our Find Property Solutions Office on 01452929995 if you wish to arrange a viewing appointment for this property or require further information.



3



1

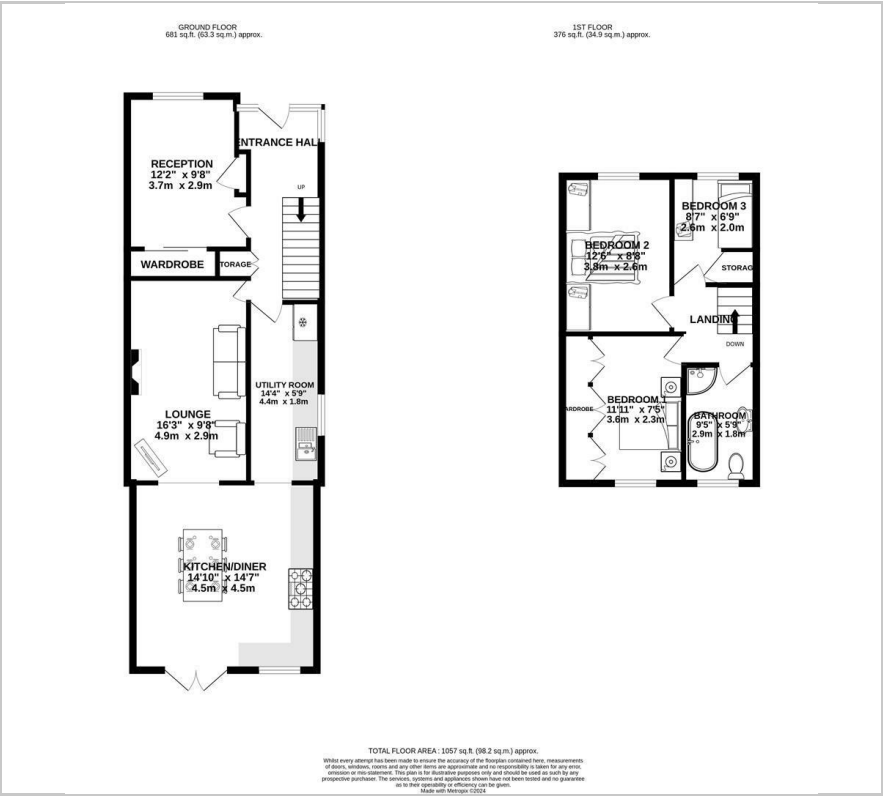


3



C

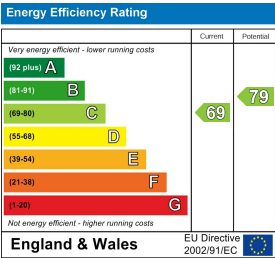
Floor Plan



Area Map



Energy Efficiency Graph



These particulars, whilst believed to be accurate are set out as a general outline only for guidance and do not constitute any part of an offer or contract. Intending purchasers should not rely on them as statements of representation of fact, but must satisfy themselves by inspection or otherwise as to their accuracy. No person in this firm's employment has the authority to make or give any representation or warranty in respect of the property.